

VinePlant Inc.

Your Trusted Service Provider



TOTAL MARINE SOLUTION

Navigating Excellence, Anchored in Experience
Your Voyage, Our Expertise: Smooth Sailing Ahead





One-stop Solution in Korea

VinePlant is a Korean marine engineering company dedicated to providing ship repair, retrofit, material supply and other related supporting services for domestic and foreign ship owners and shipyards. The one-stop platform provides relevant demanders with more choices and more efficient comprehensive services.



Korea Wide Network

Through us, you can receive perfect service from Korea that you have not experienced anywhere else. We conduct all-around cooperation with a number of high-quality ship repair companies and related spare parts suppliers to provide ship owners, ship managements, and shipbuilders with cost-effective services. We also have reached long-term cooperative relationships with many shipyards in major coastal port areas in Korea, providing services for the repair, maintenance, and modification of various types of ships around the world. No matter whether the ship's destination is any major port in Korea, ship owners can find suitable shipyards nearby to reduce ship repair costs.



All the services you need from Korea are done through VinePlant

We were started by engineers who have worked in shipbuilding & ship repair field for 20 years to provide better service through its innovative approach. VinePlant offers unique features, unparalleled customer support, and new opportunities for value creation. VinePlant has been built using the latest available technologies and is trusted by many established companies around the world. We will give you a faster and more unique experience. If you have any difficulty finding services in Korea, don't waste your time any more. You can find anything you need here.

OUR VISION

To have effective communication.

To maintain long-term and close relations with our clients.

To ensure top safety and quality standards meet international criteria.

To act as quickly and effectively as possible to investigate and resolve any quality issues that may arise.

To provide our clients with the ultimate experience and care during their stay with us.

Experienced Ship Repair

The partners of VinePlant are all the top authoritative maintenance and service companies in the industry, and can provide high-quality, low-cost, short repair term, and cost-effective service solutions in terms of maintenance technology, maintenance efficiency, and maintenance quality. With years of excellent service quality, they have won a good reputation from customers in the industry.



Perfect Service System

The service can meet the maintenance of various mainstream types of ships in the market, such as container ships, oil tankers, bulk carriers, chemical tankers, LNG, LPG and other ship types. At the same time, based on customer needs, we can supply parts and components required for maintenance, and truly realize a one-stop supporting service system.



Many Cooperative Partners (Shipyards)

We have reached in-depth cooperation with a number of high-quality shipyards, covering Korean Peninsula and other coastal areas, and there are many options for ship owners to choose for maintenance. In order not to delay the ship schedule, ship owners can choose the nearest shipyard & service provider for ship repair.



Online Smart Quotation

Through the use of our "podosea" platform, we allow users to submit maintenance documents online and generate their own order data. Each repair order can be automatically brought out for reference. Compared with the traditional quotation mode, intelligent quotation greatly improves the efficiency of quotation. It can greatly reduce the waiting time of ship owners and help shipyards & service provider to process more orders.





VinePlant is



One-stop Solution for Everything You Need

A to Z about all types of vessel easier, faster, more efficient.

Connection for Service in Korea

We have the local knowledge and industry expertise to find the best marine solution for your specific needs.

We are Engineers

We are experts who have worked in this field for over 20 years. We know more about your situation than anyone else. We have a clear solution.

Can be Founded. Whatever You're Looking for

In our network with a number of high-quality ship-related companies.

We Cover All

Based in Busan, our experienced Management Team supports across South Korea and abroad.



Head Quarter | 34, Myeongjigukje 2-ro 28beon-gil, Gangseo-gu, Busan, Republic of Korea
Tel: +82-51-714-3446

Geoje Branch | 5F Harmony Center, Hanwha Ocean Plaza, 122 Okpo-ro, Geoje-si, Gyeongsangnam-do, Republic of Korea
Tel: +82-51-921-9106

E-mail | service@vineplant.net

Web | www.vineplant.net



VinePlant Inc.



VinePlant Inc.

Your Trusted Expert Partner

SOLUTION

Engine / Electric / Manoeuvring
Ship Repair



VinePlant

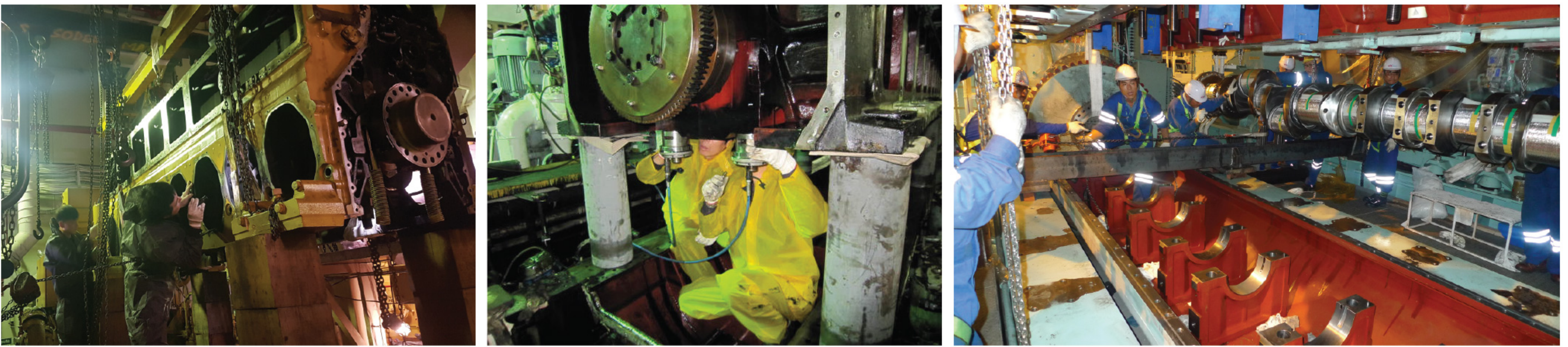
Engine Solution



Our comprehensive engine services are backed by the expertise of engineers from MAN & Wartsila, ensuring top-notch maintenance and performance for all types of engines. Collaborating closely with R&D(methanol-fuelled engines) at MAN HQ, we deliver unparalleled solutions to meet your specific needs.

Project Management

- Retrofits & Upgrades of existing Equipment
- Crankshaft Replacement
- Top & Bottom Standard Overhauls
- Deck Machinery & Steering Gear Services
- Emergency Solutions



Workshop & Engine Reconditioning Service

- All types of Cylinder Liner Honing
- Reconditioning for Cylinder Cover / Piston Crown / Skirt / Exhaust & Inlet Valve Spindle / Seat / Housing
- Turbocharger Overhaul / Balancing
- All Types of Fuel Parts Overhaul / Reconditioning



Field Services

- Repair / Recondition / Overhaul Engine Components
- Alignment & Chock Fasting
- Vibration Analysis / Engine Dock & Sea Trial
- Filtration & Separation Service & Retrofits
- Oil Mist Detector Service
- Borescope & Video Inspection
- Diagnostic & Troubleshooting



Pit-Stop Service / Exchange Program

- Cylinder Heads
- Connecting Rod
- Exhaust Valve Assemblies
- Exhaust Valve Cage
- Piston Crowns
- Liners
- Fire Land Rings
- Water & Oil Pumps



Available Engine Brand Logo



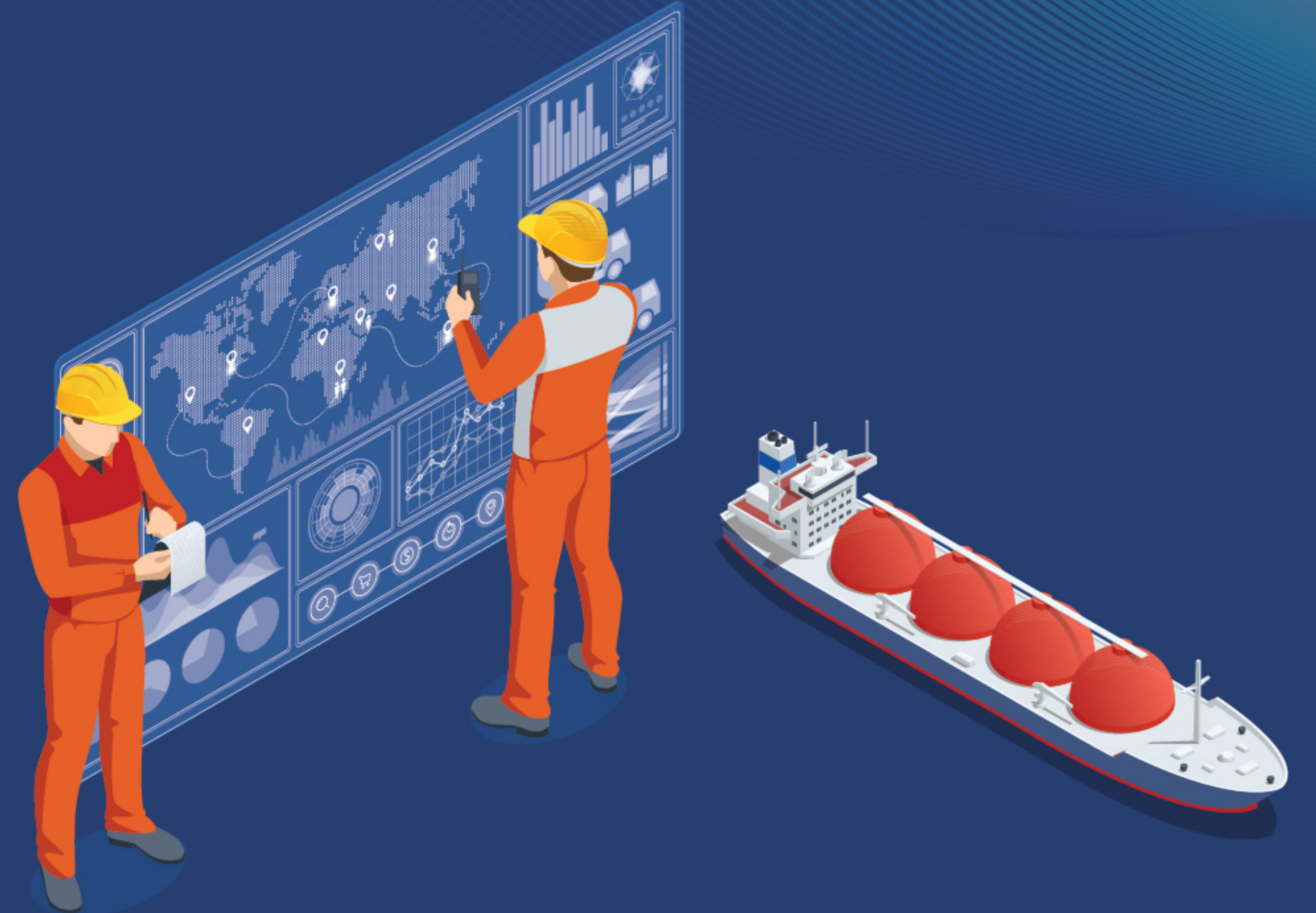
VinePlant

Electric Solution

From rewinding and overhauls for AC/DC generators and motors up to 2000kW, to fault finding and repairs for various electrical components, and even expert maintenance for navigation equipment, we've got your electrical needs covered. Plus, we're certified by Taiyo Electric, Japan, for troubleshooting in Shaft Generators and VVVF systems.

Available Electric Services

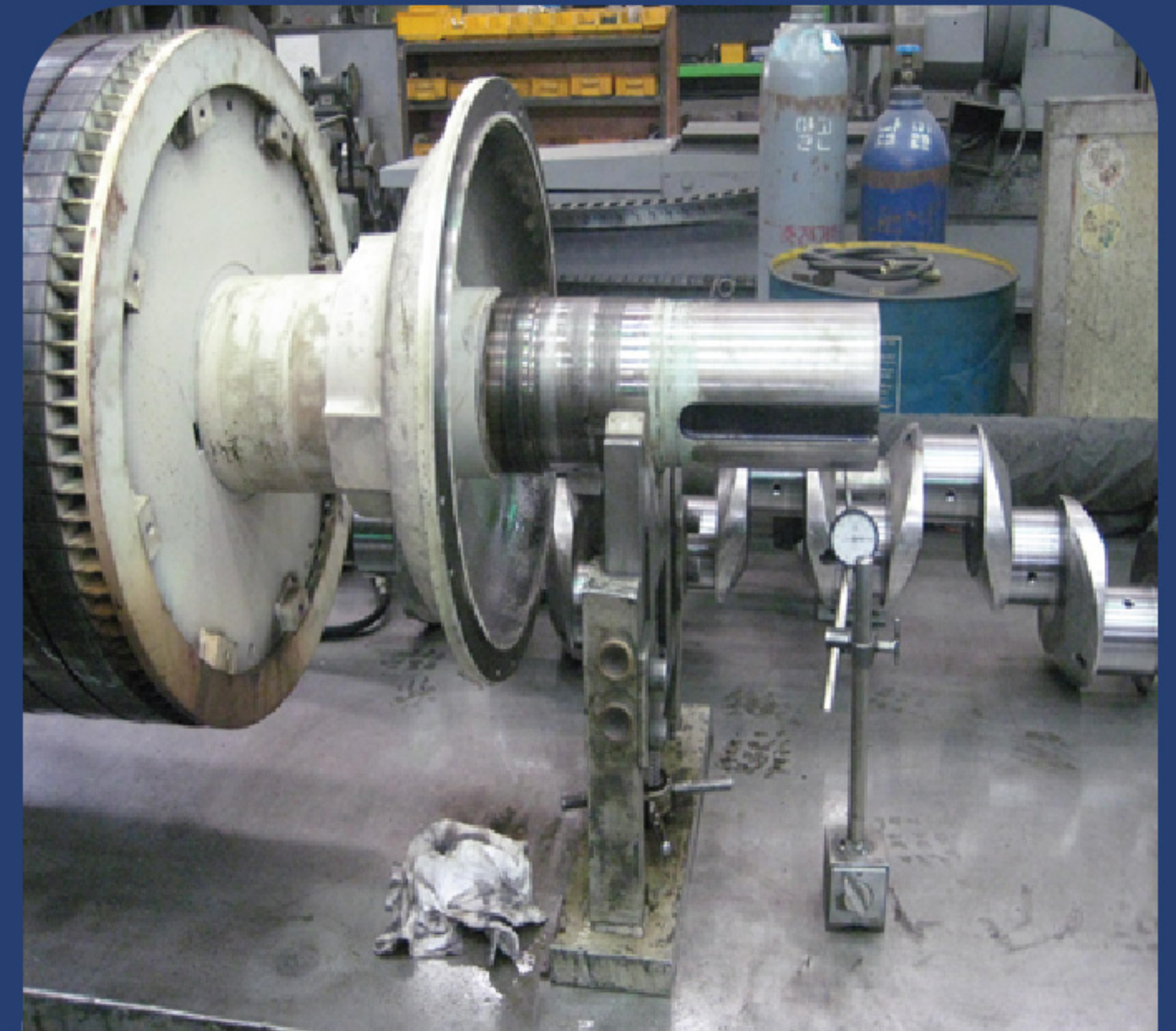
- Pannel Fabrication
- Dock Electric Service
- Class Certification Items
- Materials for any Motors and Motor Retrofit
- Overseas Service
- European Cryogenic Temperature Materials
- TAIYO Generator A/S and Parts
- ACB Materials and Retrofit
- Electric Meterials : Schneider / Donghwa Entec / Hyundai



**RETROFIT OF MSBD,
ESBD & G/E SYSTEM
CHECKING**



**OVERHAUL H.P COMP.
MOTOR TO REPAIR
ROTOR SHAFT
DAMAGE**



**ALIGNMENT
CHECKING &
DYNAMIC
BALANCING**



**BOW THRUSTER
DRIVE UNIT WORK**



**FAULT FINDING OF
MAIN SWITCH
BOARD**



**DISMANTLING COMPR
MOTER 440V
230KW 12POLE 585RPM**

VinePlant

Manoeuvring Solution

1. Rudder

- Rudder Blade, Rudder Stock, Rudder Carrier, Rudder Trunk/Horn Inspection & Repair
- Rudder & Carrier Bearings Inspection (Wear down & Clearance Check) and Replacement
- Rudder Alignment Check
- Rudder Cavitation Damage Repair
- Rudder Retrofit (Asymmetric Leading edge, Energy Saving Bulb, etc.)



2. Propulsion

- Propulsion Shaft & Bearing Alignment
- Propulsion Shaft Repair
- Stern Tube Assembly Repair
- Retrofit (Energy Saving Devices, etc.)



List of VinePlant **Other Service**

SHIP REPAIR

- Mechanical Repairs
- Electrical Repairs
- Hull and Structural Repairs
- Navigation and Communication Equipment
- Safety Equipment
- Interior Refurbishment
- Underwater Services

RETROFIT & CONVERSION

- BWTS Retrofit Work
- S.A.S. (Smart Air Safe)
- E.S.S. (Energy Saving System)
- Scrubber Retrofit Work

MATERIAL SUPPLY

- Engine Spares (2&4 Stroke)
- Deck Machinery, Motor, Pump
- Pipe & Fittings, Valves, Screws/Nut
- Marine Paint, Oil & Chemicals
- Fire Fighting, Safety equipment
- Provisions & Bonded Stores
- Supply Chain Management(SCM)

TECHNICAL SUPPORT

- Technical Solutions and Supervision
- Remote Inspection
- Qualified Manpower

Head Quarter | 34, Myeongjigukje 2-ro 28beon-gil, Gangseo-gu, Busan, Republic of Korea
Tel: +82-51-714-3446

Geoje Branch | 5F Harmony Center, Hanwha Ocean Plaza, 122 Okpo-ro, Geoje-si, Gyeongsangnam-do, Republic of Korea
Tel: +82-51-921-9106

E-mail | service@vineplant.net

Web | www.vineplant.net